

easypoint™

BLOOD COLLECTION TUBE HOLDER WITH NEEDLE

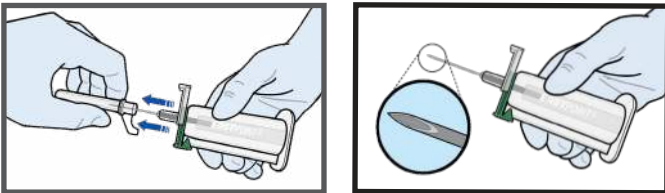
SAVES MONEY,
TIME & LIVES

PRODUCT USAGE INFORMATION

- Open the package using the designated peel-apart tabs.
- Needle is attached. No assembly is required.

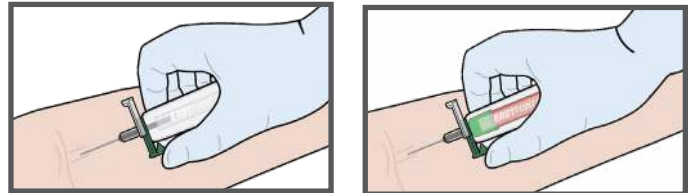
PREPARE

Select and prepare venipuncture site using aseptic technique according to institutional policy. Carefully remove needle cover by pulling the cover straight off (*do not twist*) when ready to use. The needle bevel is positioned for venipuncture when EASYPPOINT® (printed on the tube holder) is facing up.



PERFORM

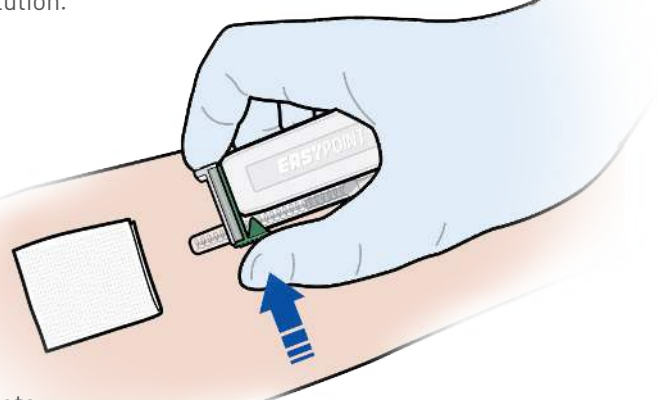
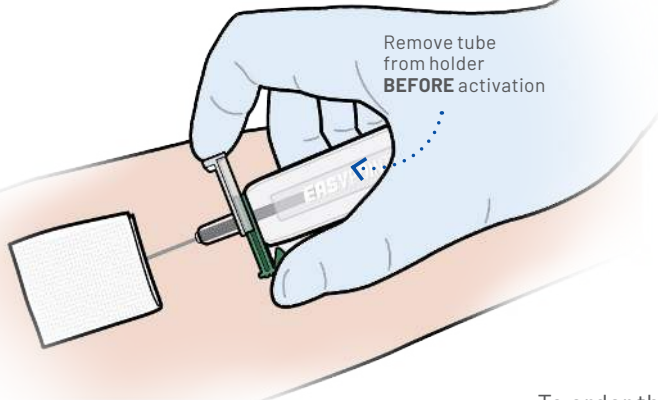
Perform venipuncture per protocol of institution. Insert blood collection tube into the tube holder, pushing forward to start blood flow. Remove blood collection tube when filled and repeat with additional tubes as required. Avoid pressure to the clear tab during blood collection.



PROTECT

Remove the last tube from holder when blood collection is complete. Activate the retraction mechanism using a **squeezing motion** to slide the color-coded finger tab toward the clear tab until the needle retracts. **Do not push the clear tab upward.** Activation of the retraction mechanism while the needle is still in the patient's vein minimizes exposure to the contaminated needle and reduces the risk of needlestick injuries.

When activated, the needle will automatically retract into the safety chamber, preventing exposure to the contaminated needle and rendering the tube holder non-reusable. In the event that the needle retraction mechanism does not activate, discard tube holder in an appropriate sharps container per protocol of institution. Do not recap contaminated needles. Dispose of tube holder in an appropriate sharps container per protocol of institution.



To order these products,
please contact
rtisales@retractable.com



www.retractable.com

PRECAUTIONS:

Single use only. Reuse of this device may result in exposure to bloodborne pathogens including Hepatitis B virus (HBV), Hepatitis C virus (HCV), and human immunodeficiency virus (HIV). Contents are sterile, non-toxic, and non-pyrogenic. Do not use if product or individual package is damaged. Not made with natural rubber latex. Not made with DEHP. Not made with PVC. Use with commercially available evacuated blood collection tubes. Activation of the retraction mechanism after withdrawing needle may cause minimal splatter. U.S. Federal law restricts this device to sale by or on the order of a physician.



RETRACTABLE
TECHNOLOGIES, INC.®

©2022, 2026 Copyright Retractable Technologies, Inc. All rights reserved. MKT-FLY-EPBCTH-0032 REV. 0, FEB 2026