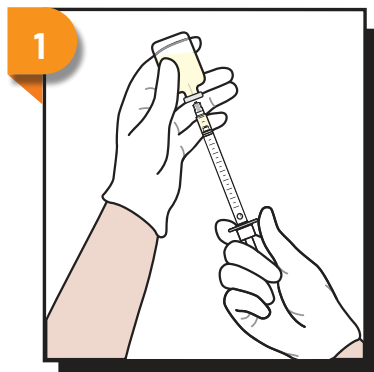
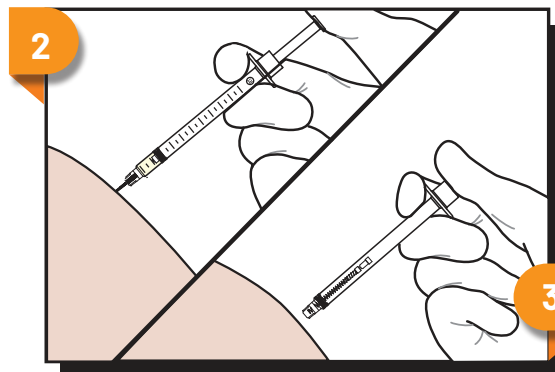


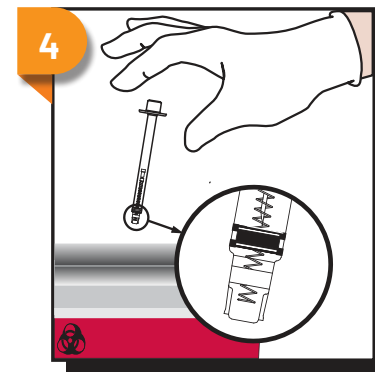
U-100 Insulin Syringe



Standard Draw Procedure



In-Patient, Automatic Retraction



Non-Reusable

Product Usage Information:

1. Prepare and give injection using aseptic technique according to institutional policy.
2. Continue depressing plunger to activate automatic needle retraction **while needle is still in patient. Full dose is administered when the plunger handle is fully depressed, which activates the needle retraction mechanism.**
3. Needle will automatically retract into syringe, preventing exposure to contaminated needle and rendering syringe non-reusable. In the event that needle retraction mechanism does not activate, discard syringe in an appropriate sharps container per protocol of institution. Do not recap contaminated needles.
4. Dispose of VanishPoint[®] syringe in an appropriate sharps container per protocol of institution.

Precautions:

- Use U-100 Insulin only.
- Single use only. Reuse of this device may result in exposure to bloodborne pathogens, including Hepatitis B virus (HBV), Hepatitis C virus (HCV), and human immunodeficiency virus (HIV).
- Contents are sterile, non-toxic, and non-pyrogenic. Do not use if product or package is damaged.
- Not made with natural rubber latex.
- Use only with attached needle. Needle cannot be changed.
- Automated needle retraction occurs only when barrel is emptied and plunger is fully depressed.
- For injections where full dose is not administered, expel remaining contents according to institutional policy if applicable and activate needle retraction.
- This device may be restricted for sale by or on the order of a physician.



www.retractable.com

To order these products,
please contact
rtisales@retractable.com



RETRACTABLE
TECHNOLOGIES, INC.

511 Lobo Lane, Little Elm Texas, 75068-5295 USA
Tel: (972) 294-1770, Fax: (972) 294-4400, Toll Free: 1-888-703-1010